

Ergonomic

- / State-of-the-art design makes a clear footwell with wellplaced pedals which give plenty of room for large feet space and help the driver's comfort working.
- / The simple, concise instrument panel minimizes confusion but gives the key warnings to operator.
- / Hydraulic levers can be mounted beside the battery or on the scuttle, giving easy access from either side. The conventional cabin layout makes the inexperienced operator work easily without time-consuming training.
- / Adjustable steering wheel and seat make the operator in comfortable working position.



Maneuverability

- / Drive to the rear steering wheel gives safe truck operation in confined spaces. The turning angle of rear wheel is upto 90 degree, compared with the same load capacity 4 pivot trucks, the turning radius is smaller about 400 to 450mm.
- / Driving speed is automatically reduction during cornering.

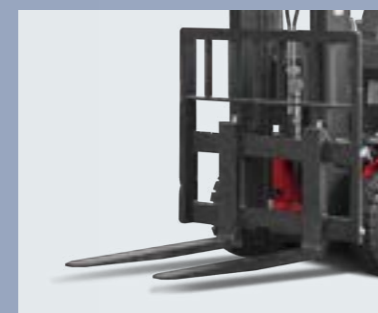


Reliability

- / AC motor is the simple brushless motor, less maintenance and better suitability for wet & explosive conditions.
- / Maintenance is easy and low-cost.

Side battery change

- / 24V battery is ideal for two or three shifts requirements, and side battery change is a perfect option to change the batteries quickly.



ZHEJIANG HANGCHA IMP. & EXP. CO., LTD.

Factory site: 666 Xiangfu Road,
Hangzhou, Zhejiang, China (311305)

Tel: +86-571-88926735 88926755
Fax: +86-571-88926789 88132890

sales@hcforklift.com
www.hcforklift.com



2023 VERSION 1/COPYRIGHT 2023/08

HANGCHA GROUP CO., LTD. reserves the right to make any changes without notice concerning colors, equipment, or specifications detailed in this brochure, or to discontinue individual models. The colors of trucks, delivered may differ slightly from those in brochures.



A series 3-pivot Rear Drive Electric Forklift

with capacities of 1,500kg

The World of Hangcha



A series 3-pivot Rear Drive Electric Forklift

A series 1.5t rear-wheel driving three pivot electric forklift truck is very suitable for operating in limited space, with small turning radius, which is the ideal forklift truck in store, supermarket and warehouse, etc.

Standard specification

- / Solid tyre
- / Emergency disconnect switch
- / Full suspension seat
- / Drive, lift, steering controlled
- / Self-diagnose system
- / 2 spools valves
- / 3m wide view mast
- / Adjustable steering wheel
- / Multi-function LCD display and trucklighting system
- / Rear view mirror
- / Side battery change



Options

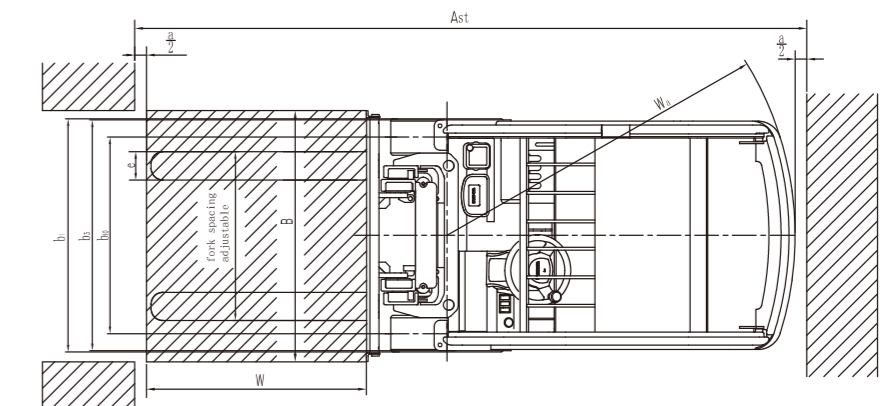
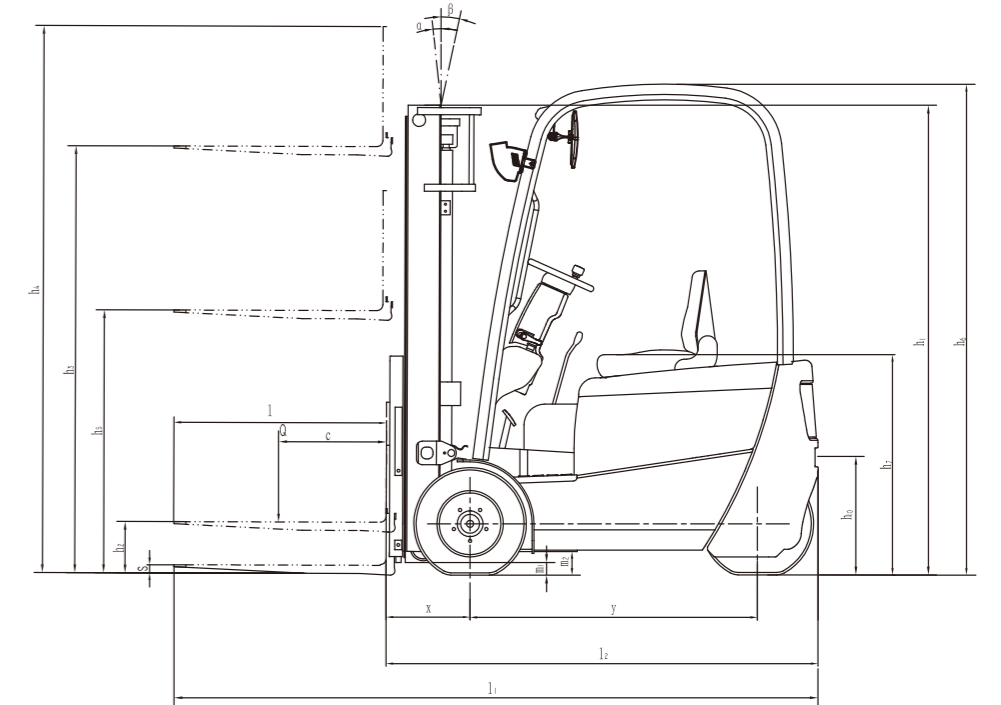
- / Drive wheel with Pneu tyres
- / 3 or 4 spools control valves
- / 4.3-6m full free triplex mast
- / 2.5-4.5m full free duplex mast
- / Different length forks
- / Attachments
- / Different load backrest
- / Tool box

1.5t Three-wheel Forklift Specification

Distinguishing mark	1.1	Manufacturer	HANGCHA GROUP CO.,LTD.
	1.2	Manufacturer's model designation	CPD515-AHC4
	1.3	Drive: electric (battery or mains), diesel, petrol, fuel gas	Electric
	1.4	Operator type: hand, pedestrian, standing, seated, order-picker	Seated
Weight	1.5	Load capacity	Q /kg 1500
	1.6	Load centre distance	c/mm 500
	1.8	Load distance, center of drive axle to fork	x/mm 365
	1.9	Wheelbase	y/mm 1220
Wheel & tyres	2.1	Service weight with battery	kg 3000
	2.2	Axle loading with load, front/rear	kg 3930/570
	2.3	Axle loading, unladen front/rear	kg 1370/1630
	3.1	Tyres: solid rubber, superelastic, pneumatic, polyurethane	solid rubber
Dimensions	3.2	Tyre size - front	18x7-8
	3.3	Tyre size - rear	200/50-10
	3.5	Wheel, number operator/load side (x=drive)	2/1x
	3.6	Tread, front	b ₁₀ /mm 835
	4.1	Tilt of mast/fork carriage forward/backward	α/β(°) 6/5
	4.2	Height, mast lowered	h ₁ /mm 1980
	4.3	Free lift	h ₂ /mm 155
	4.4	Lift	h ₃ /mm 3000
	4.5	Height, mast extended	h ₄ /mm 3955
	4.7	Height of overhead guard (cabin)	h ₅ /mm 2105
	4.8	Seat height/stand height	h ₆ /mm 940
	4.12	Coupling height	h ₇ /mm 500
	4.19	Overall length	l ₁ /mm 2785
	4.20	Length to face of forks	l ₂ /mm 1865
	4.21	Overall width	b ₂ /mm 990
	Performance	4.22	Fork thickness
4.23		Fork carriage to DIN 15173 - class/form A or B	ISO II A
4.24		Fork carriage width	b ₃ /mm 1000
4.31		Ground clearance, with load, below mast	m ₁ /mm 100
4.32		Ground clearance, centre of wheelbase	m ₂ /mm 100
4.33		Aisle width for pallets 1000 x 1200 crossways	Ast/mm 3160
4.34		Aisle width for pallets 800 x 1200 lengthways	Ast/mm 3285
4.35		Turning radius	Wa/mm 1510
5.1		Travel speed, laden/unladen	km/h 9/9.5
Motors		5.2	Lift speed laden
	5.3	Lowering speed laden	m/s 0.580/0.480
	5.6	Max. Drawbar pull, laden/unladen	N 6400/6300
	5.7	Gradeability, laden/unladen	% 7/9
	5.9	Acceleration time, laden/unladen (0-10m)	s 6.0/5.8
	5.10	Service brake	Hydraulic
Other	6.1	Drive motor rating S2 60min.	kW AC 4
	6.2	Lift motor rating S3 15%	kW AC 8.6
	6.3	Battery equipment to DIN 43531/35/36 A, B, C, no	DIN 43535 A
	6.4	Battery voltage, nominal capacity(5h)	V/Ah 24/920
	6.5	Battery weight	kg 675
	6.6	Energy consumption acc. to VDI cycle	kWh/h 3.5
Other	9.1	Drive control	CURTIS AC
	10.1	Operating pressure for attachments	bar 145
	10.2	Oil volume for attachments	l/min 16
10.7	Sound pressure level at the driver's seat	dB(A) < 70	

1.5t Three-wheel Forklift Mast Specification

Type	Mast fork height	Overall height				Free lift		Tilting range		Load capacity at 500mm
		Lowered	Extended		Without backrest	With backrest	Forward	Backward		
	mm	mm	mm	mm	mm	mm	(°)	(°)	1.5t	
Duplex mast	2700	1830	3655	3233	155	155	6	5	1500	
	3000	1980	3955	3533	155	155	6	5	1500	
	3300	2130	4255	3833	155	155	6	5	1500	
	3500	2230	4455	4033	155	155	6	5	1500	
	3600	2330	4555	4133	155	155	6	5	1500	
	4000	2580	4955	4533	155	155	3.5	5	1500	
Full free duplex mast	4300	2730	5255	4833	155	155	3.5	5	1400	
	4500	2830	5455	5033	155	155	3.5	5	1300	
	2500	1745	3445	3059	800	1186	6	5	1500	
	2700	1845	3645	3259	900	1286	6	5	1500	
	3000	1995	3945	3559	1050	1436	6	5	1500	
	3300	2145	4245	3859	1200	1586	6	5	1500	
Triplex full free mast	3500	2245	4445	4059	1300	1686	6	5	1500	
	3600	2295	4545	4159	1350	1736	6	5	1500	
	4000	2545	4945	4559	1600	1986	3.5	5	1500	
	4300	2745	5145	4759	1700	2086	3.5	5	1500	
	4500	2845	5245	4859	1750	2136	3.5	5	1500	
	4700	2945	5345	4959	1800	2186	3.5	5	1500	
	4800	2995	5395	4959	1800	2186	3.5	5	1300	
	5000	3045	5445	4959	1800	2186	3.5	5	1250	
	5500	3245	5645	5145	1900	2286	3.5	5	1200	
	6000	3445	5845	5345	2000	2386	3.5	5	1000	
6500	3645	6045	5545	2100	2486	3.5	5	600		



a=200 mm safety clearance
 $AST=a+Wa+(W+x)^2+(B/2)^2$

